

# GAYTON HOUSE

VICARAGE ROAD, YATELEY, HAMPSHIRE GU46 7QS

## Apartment 14

### FIRST FLOOR

### 2 BEDROOMS

#### KITCHEN/DINING/LIVING

24ft 10in x 9ft 6in (7.58m x 2.9m)

#### BEDROOM 1

15ft 7in x 8ft 8in (4.76m x 2.65m)

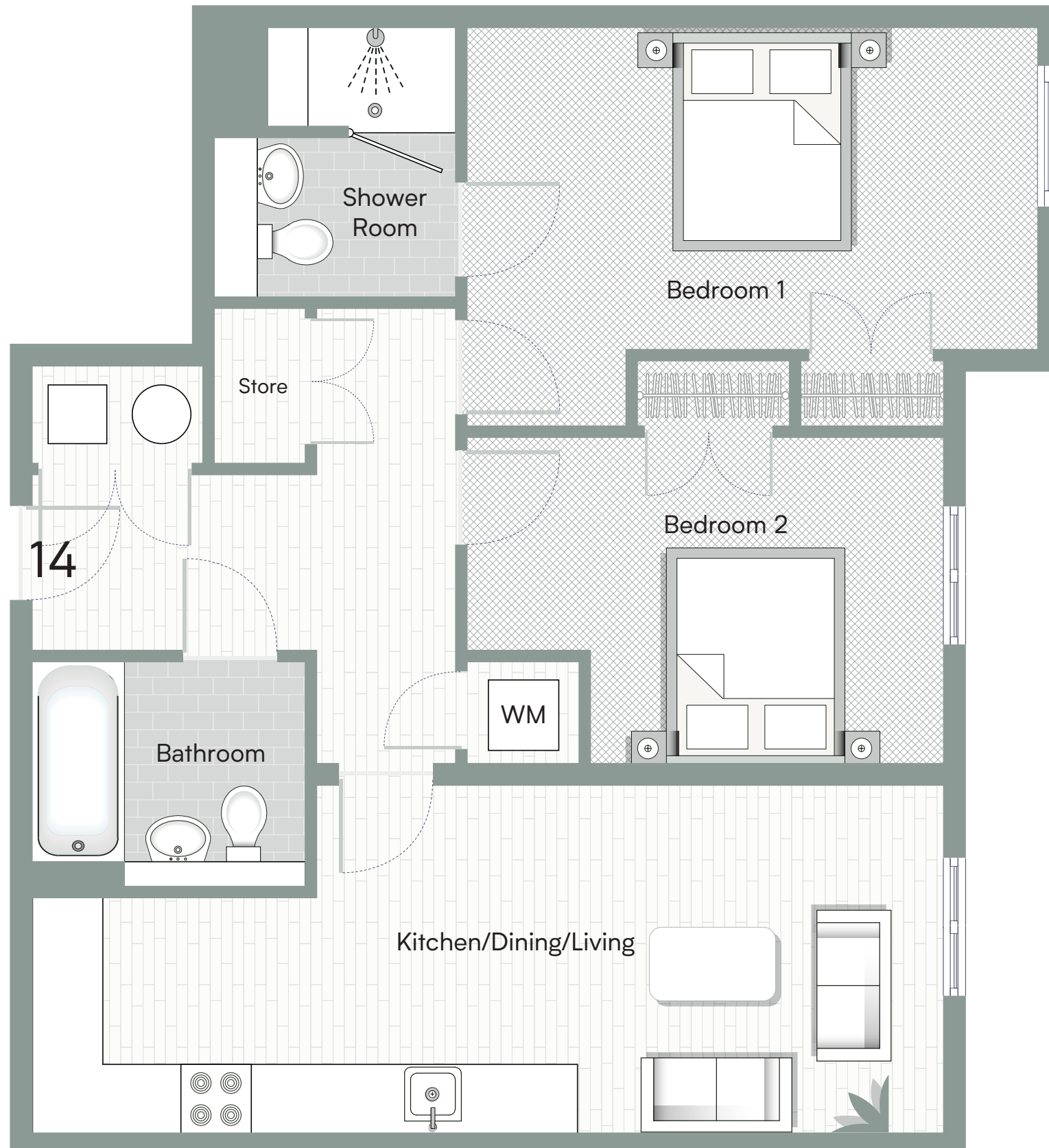
#### BEDROOM 2

13ft 0in x 8ft 11in (3.97m x 2.73m)

#### DESCRIPTION

This first-floor apartment features a bright open-plan kitchen/dining/living area. Both double bedrooms are generously sized and include built-in wardrobes, with the principal bedroom including an ensuite with a walk-in shower. A separate bathroom, hallway storage cupboard, and a utility area with washing machine provision complete the layout.

Important notice: Computer generated imagery is indicative only. Photography featured is of previous Lilyford Homes Ltd local area and stock lifestyle imagery. Details correct at time of print, however some items may have changed since printing. All plans, dimensions and layouts must be used for guidance only as they have been extracted for architectural drawings. Features may vary. All imagery is indicative, does not form any part of a contract. Lilyford Homes Ltd may make amendments to specification without prior notice. Please do not rely on the Computer Generated Imagery, visuals and plans for carpet sizes, appliances, furniture or any such items.



Lilyford

[sales@lilyford.co.uk](mailto:sales@lilyford.co.uk)  
01730 770 660