

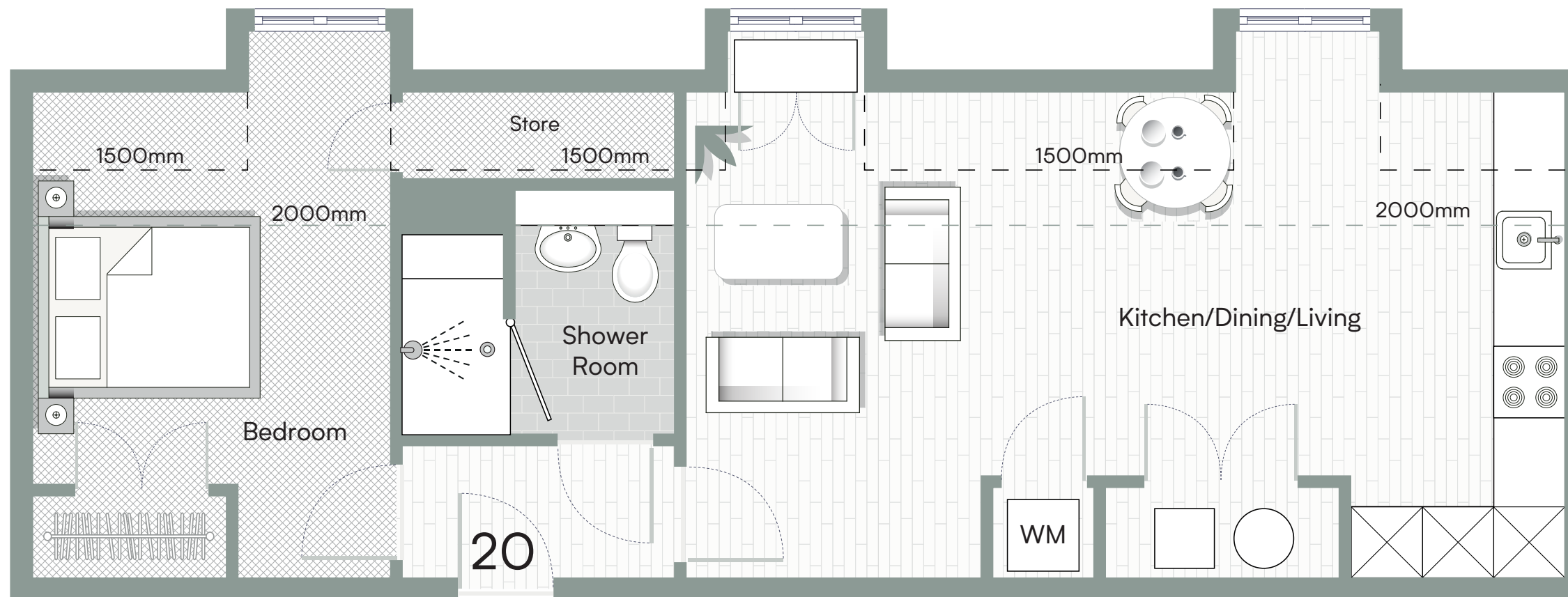
GAYTON HOUSE

VICARAGE ROAD, YATELEY, HAMPSHIRE GU46 7QS

Apartment 20

SECOND FLOOR

1 BEDROOM



KITCHEN/DINING/LIVING

23ft 1in x 13ft 2in (7.03m x 4.01m)

BEDROOM

11ft 0in x 10ft 8in (3.36m x 3.26m)

DESCRIPTION

This second-floor apartment, accessible by lift, features a bright open-plan kitchen/dining/living area with large windows and a utility cupboard. The spacious double bedroom includes built-in wardrobes and additional storage. A bathroom with a walk-in shower completes the layout.

Important notice: Computer generated imagery is indicative only. Photography featured is of previous Lilyford Homes Ltd local area and stock lifestyle imagery. Details correct at time of print, however some items may have changed since printing. All plans, dimensions and layouts must be used for guidance only as they have been extracted for architectural drawings. Features may vary. All imagery is indicative, does not form any part of a contract. Lilyford Homes Ltd may make amendments to specification without prior notice. Please do not rely on the Computer Generated Imagery, visuals and plans for carpet sizes, appliances, furniture or any such items.



Lilyford

sales@lilyford.co.uk
01730 770 660