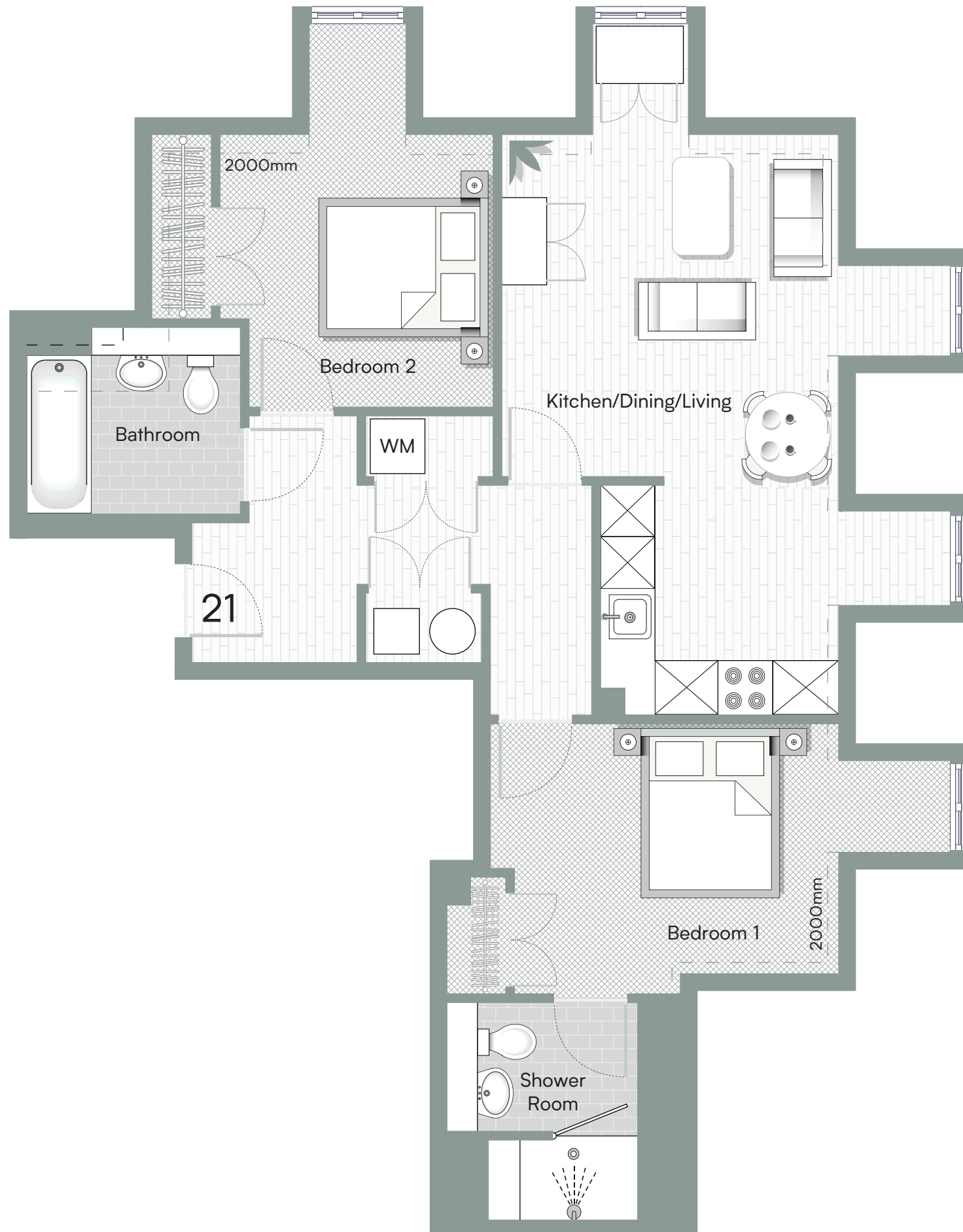


GAYTON HOUSE

VICARAGE ROAD, YATELEY, HAMPSHIRE GU46 7QS

Apartment 21 SECOND FLOOR 2 BEDROOMS



DESCRIPTION

This second-floor apartment, accessible by lift, features a spacious, dual-aspect kitchen/dining/living area. Both double bedrooms include built-in wardrobes, and the principal bedroom has an ensuite with a walk-in shower. A separate bathroom and a utility cupboard with washing machine provision complete the layout.

Important notice: Computer generated imagery is indicative only. Photography featured is of previous Lilyford Homes Ltd local area and stock lifestyle imagery. Details correct at time of print, however some items may have changed since printing. All plans, dimensions and layouts must be used for guidance only as they have been extracted for architectural drawings. Features may vary. All imagery is indicative, does not form any part of a contract. Lilyford Homes Ltd may make amendments to specification without prior notice. Please do not rely on the Computer Generated Imagery, visuals and plans for carpet sizes, appliances, furniture or any such items.

KITCHEN/DINING/LIVING

12ft 3in x 20ft 10in (3.73m x 6.34m)

BEDROOM 1

12ft 6in x 8ft 11in (3.82m x 2.73m)

BEDROOM 2

9ft 9in x 9ft 9in (2.98m x 2.98m)



Lilyford

sales@lilyford.co.uk
01730 770 660