



GAYTON HOUSE

VICARAGE ROAD, YATELEY, HAMPSHIRE GU46 7QS

Apartment 22

SECOND FLOOR

2 BEDROOMS

KITCHEN/DINING/LIVING

26ft 2in x 11ft 6in (7.97m x 3.51m)

BEDROOM 1

13ft 11in x 12ft 1in (4.24m x 3.68m)

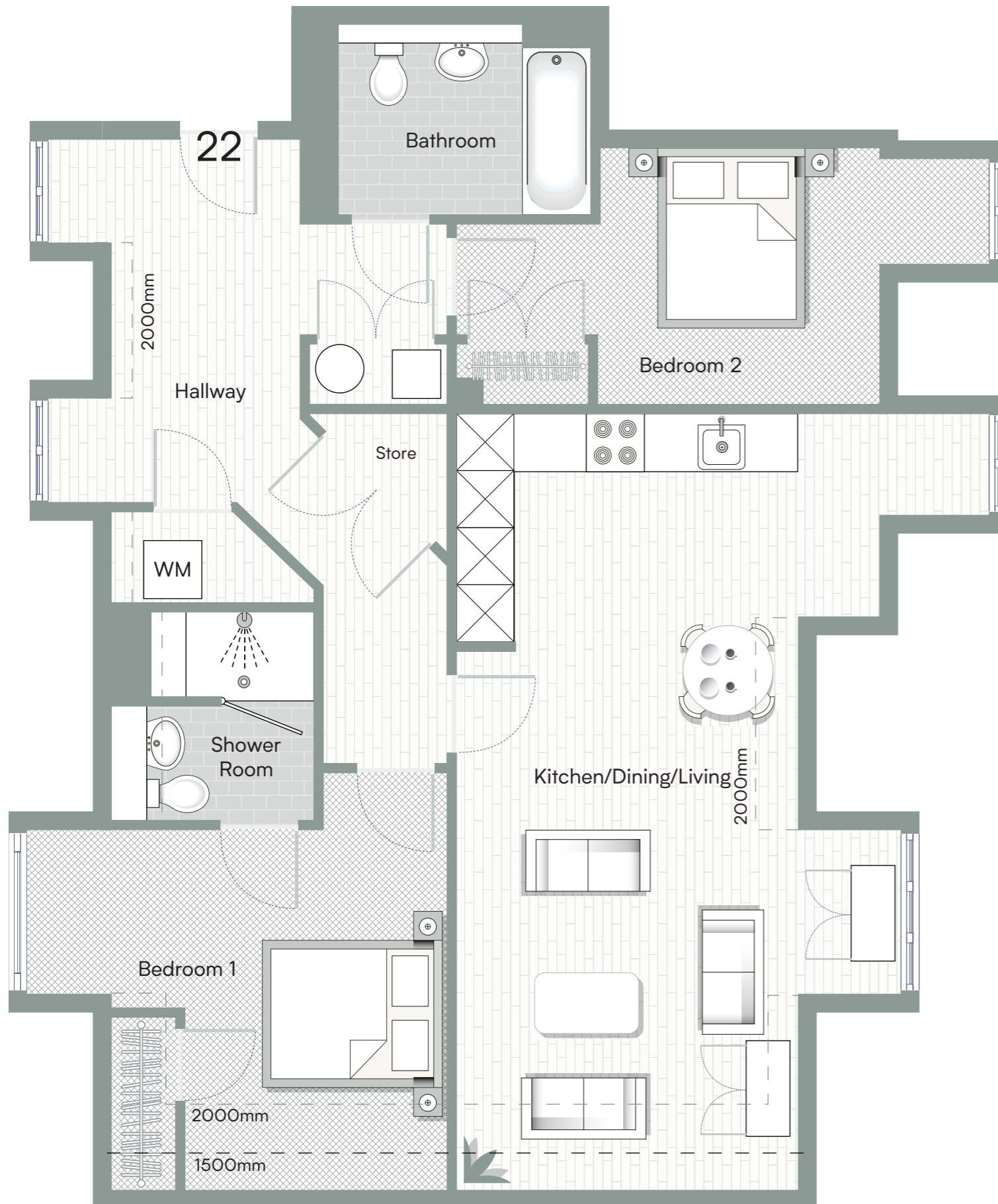
BEDROOM 2

14ft 3in x 8ft 11in (4.35m x 2.71m)

DESCRIPTION

This second-floor apartment, accessible by lift, features a spacious kitchen/dining/living area designed for both everyday use and entertaining. Both double bedrooms include built-in wardrobes, with the principal bedroom benefitting from an ensuite with a walk-in shower. A separate bathroom, hallway storage cupboard, and a utility area with washing machine provision complete the layout.

Important notice: Computer generated imagery is indicative only. Photography featured is of previous Lilyford Homes Ltd local area and stock lifestyle imagery. Details correct at time of print, however some items may have changed since printing. All plans, dimensions and layouts must be used for guidance only as they have been extracted for architectural drawings. Features may vary. All imagery is indicative, does not form any part of a contract. Lilyford Homes Ltd may make amendments to specification without prior notice. Please do not rely on the Computer Generated Imagery, visuals and plans for carpet sizes, appliances, furniture or any such items.



Lilyford

sales@lilyford.co.uk
01730 770 660