

GAYTON HOUSE

VICARAGE ROAD, YATELEY, HAMPSHIRE GU46 7QS

Apartment 9

FIRST FLOOR

2 BEDROOMS

KITCHEN/DINING/LIVING

12ft 6in x 21ft 5in (3.8m x 6.53m)

BEDROOM 1

13ft 3in x 11ft 6in (4.03m x 3.5m)

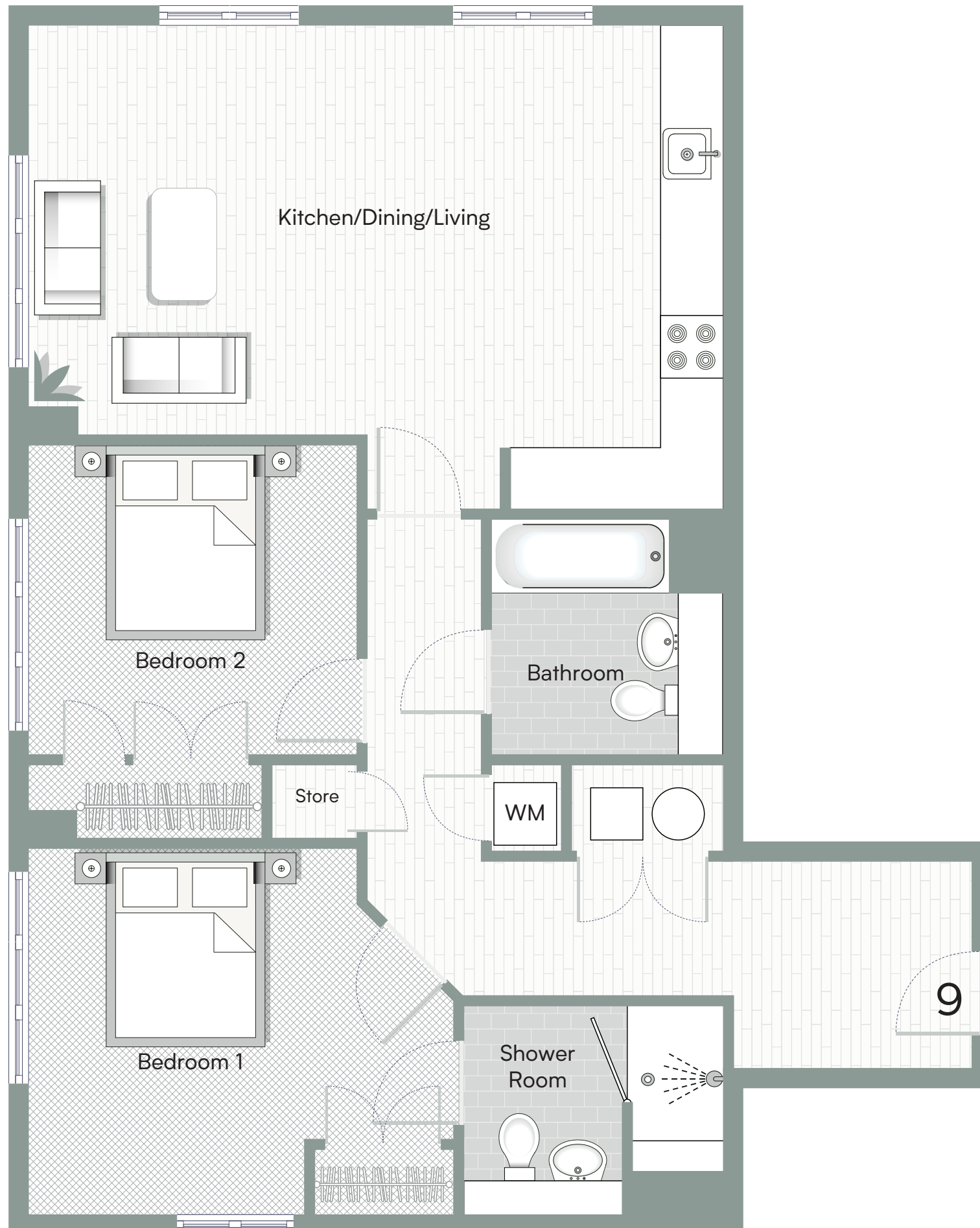
BEDROOM 2

9ft 9in x 10ft 2in (2.98m x 3.1m)

DESCRIPTION

This first-floor apartment features a bright, dual-aspect kitchen/dining/living area. Two double bedrooms include built-in wardrobes, with the principal bedroom benefitting from an ensuite with a walk-in shower. A separate bathroom, hallway storage cupboard, and a utility space with provision for a washing machine complete the layout.

Important notice: Computer generated imagery is indicative only. Photography featured is of previous Lilyford Homes Ltd local area and stock lifestyle imagery. Details correct at time of print, however some items may have changed since printing. All plans, dimensions and layouts must be used for guidance only as they have been extracted for architectural drawings. Features may vary. All imagery is indicative, does not form any part of a contract. Lilyford Homes Ltd may make amendments to specification without prior notice. Please do not rely on the Computer Generated Imagery, visuals and plans for carpet sizes, appliances, furniture or any such items.



Lilyford

sales@lilyford.co.uk
01730 770 660